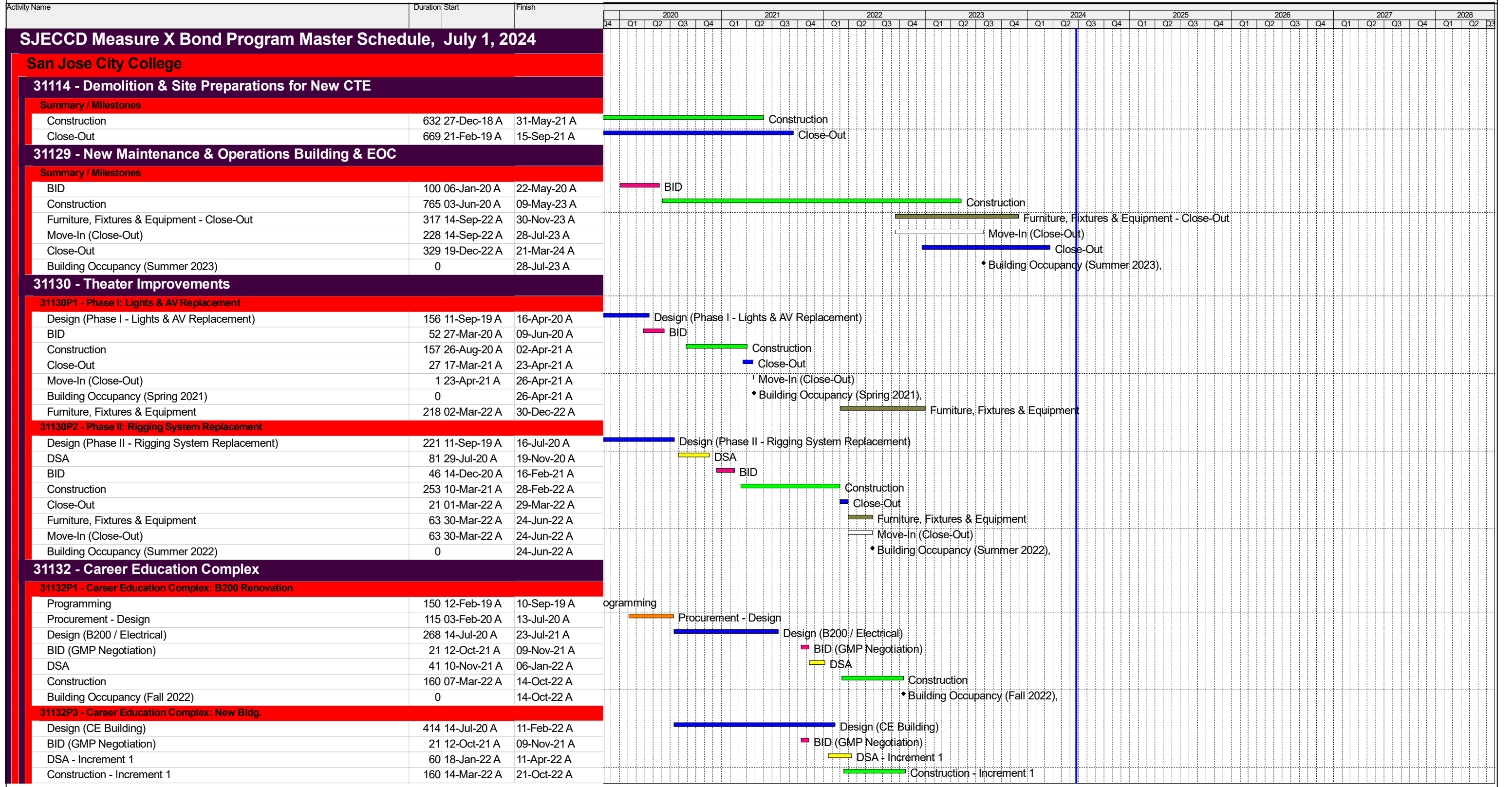


# SJECCD Measure X Bond Program Master Schedule

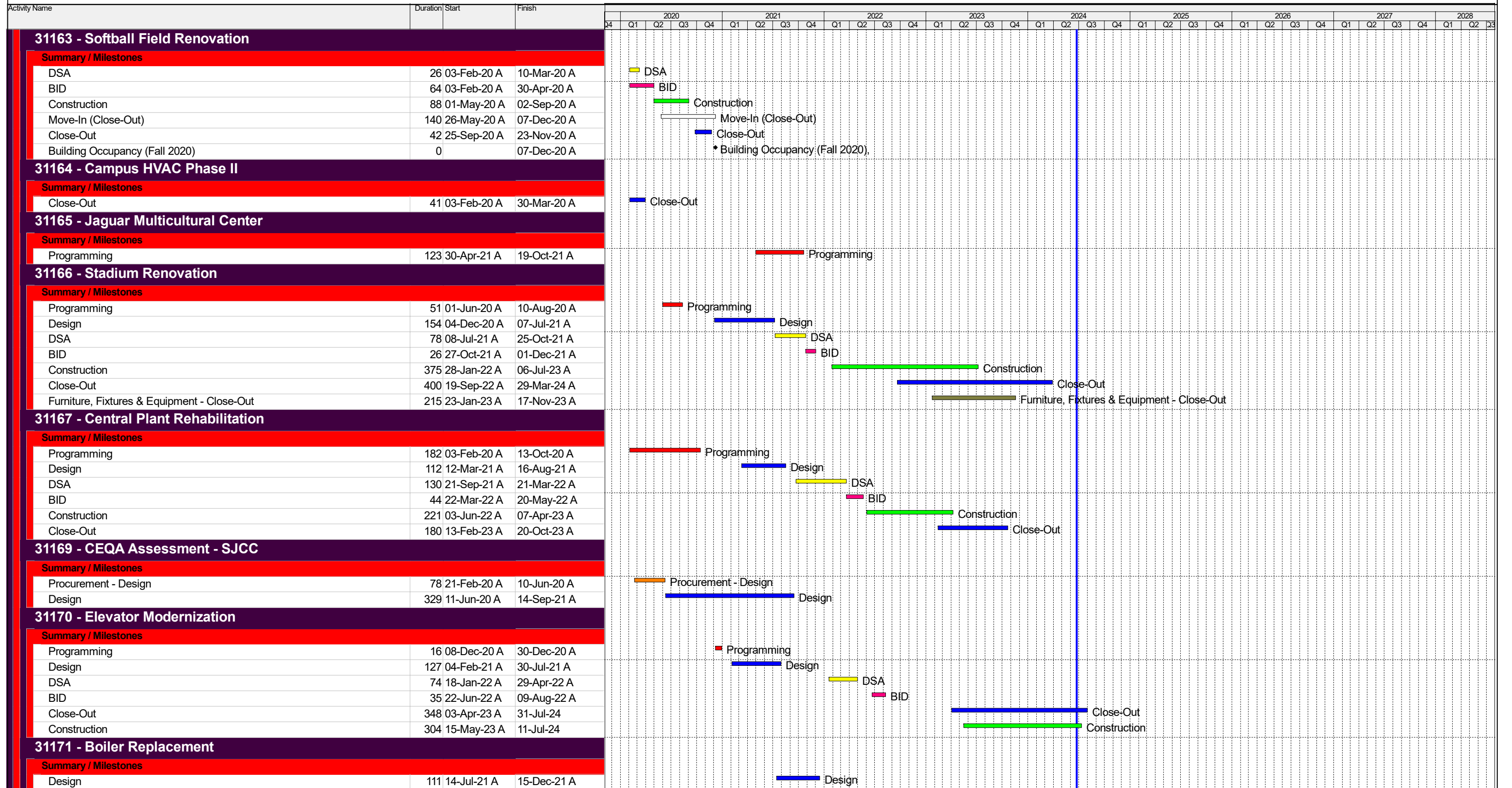
## Status as of July 1, 2024





# SJECCD Measure X Bond Program Master Schedule

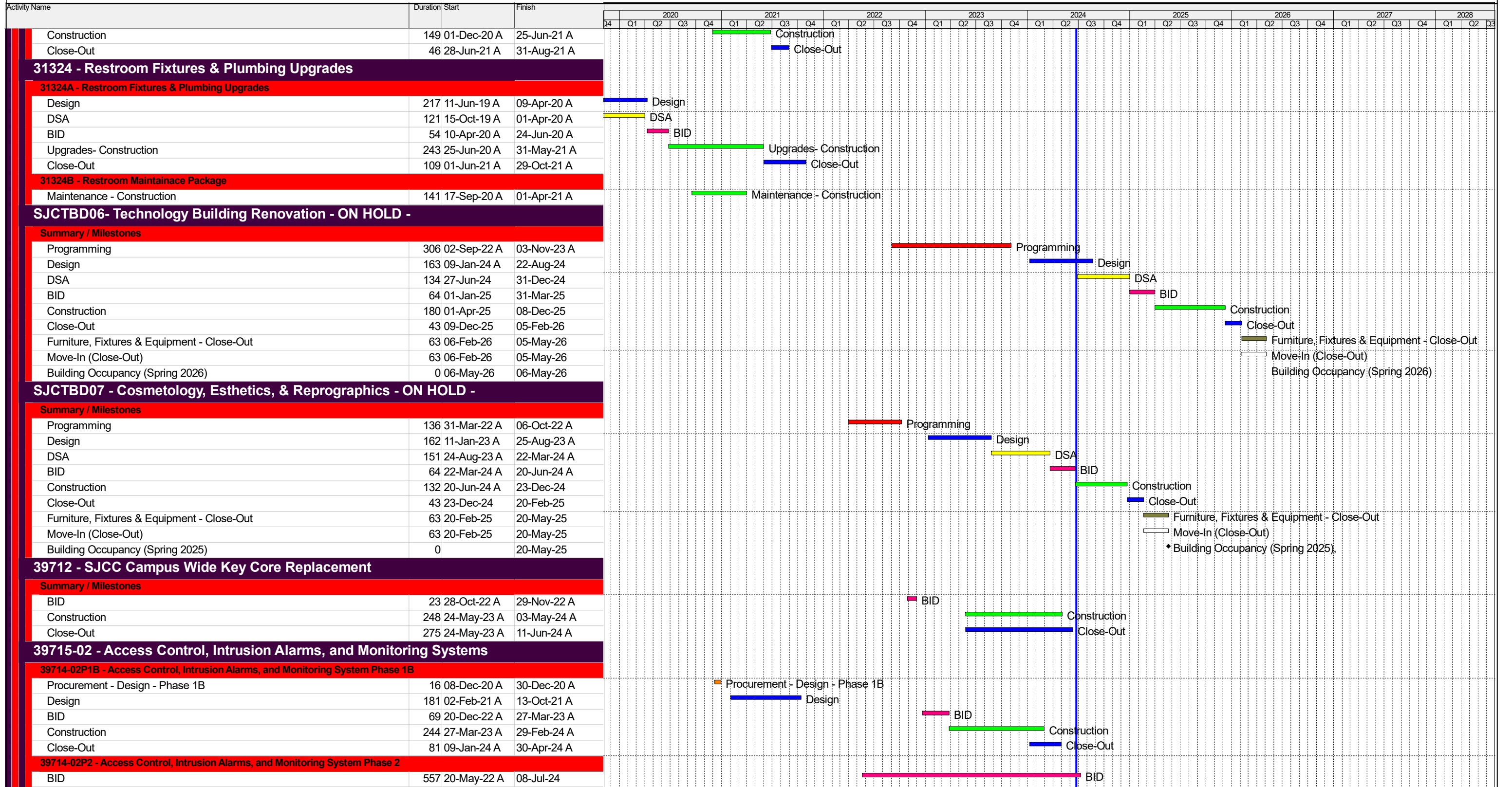
## Status as of July 1, 2024





# SJECCD Measure X Bond Program Master Schedule

## Status as of July 1, 2024





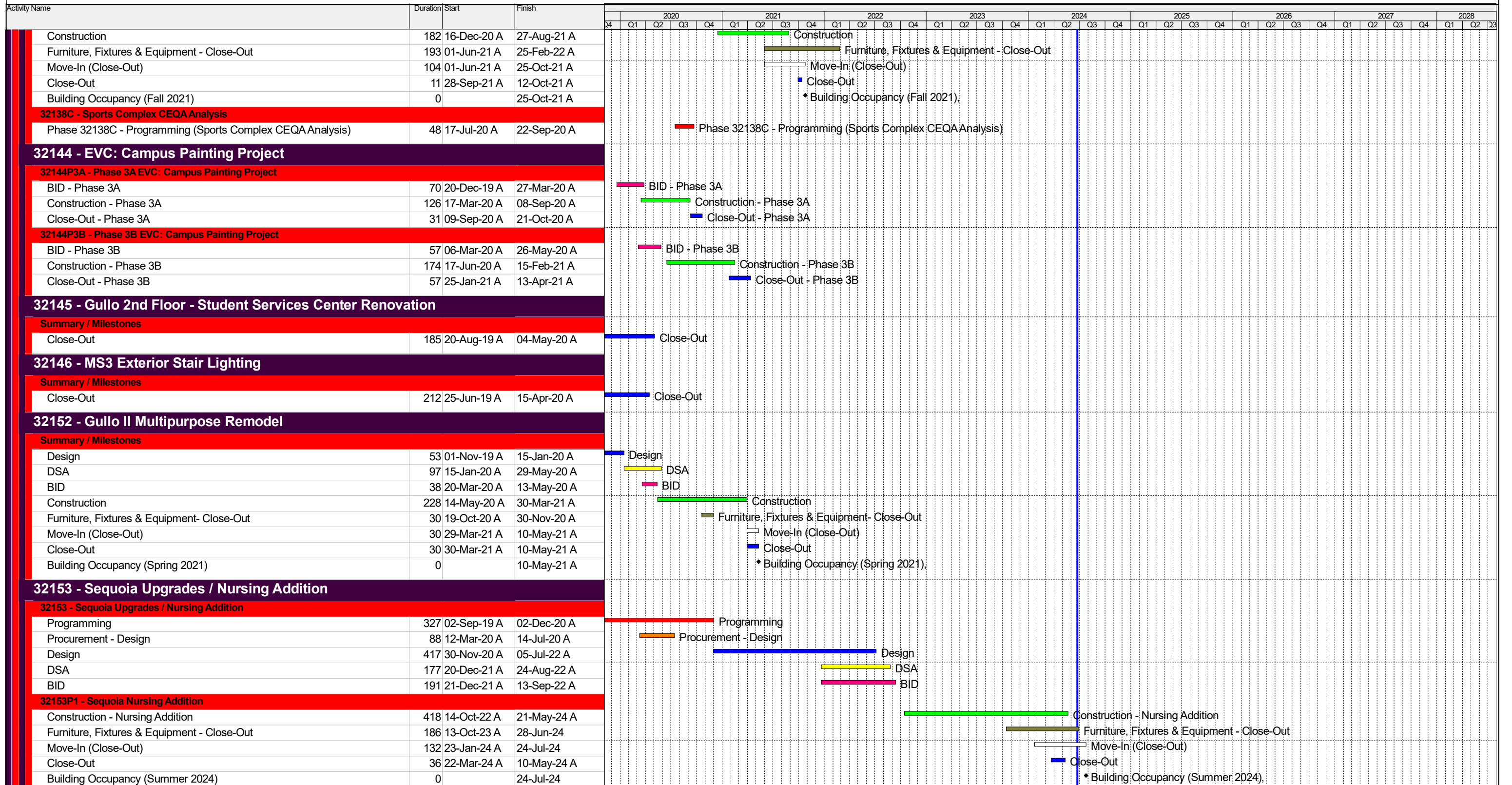
# SJECCD Measure X Bond Program Master Schedule

## Status as of July 1, 2024

Activity Name	Duration	Start	Finish	2020												2021				2022				2023				2024				2025				2026				2027				2028	
				Q4	Q1	Q2	Q3	Q4	Q1	Q2	Q3	Q4	Q1	Q2	Q3	Q4	Q1	Q2	Q3	Q4	Q1	Q2	Q3	Q4	Q1	Q2	Q3	Q4	Q1	Q2	Q3	Q4	Q1	Q2	Q3	Q4	Q1	Q2							
<b>Evergreen Valley College</b>																																													
<b>32126 - Acacia Renovation Phase III</b>																																													
<b>Summary / Milestones</b>																																													
Close-Out	254	08-Apr-19 A	27-Mar-20 A	Close-Out																																									
<b>32127 - Gullo Student Space Repurpose and Renovation</b>																																													
<b>Summary / Milestones</b>																																													
Close-Out	377	17-Oct-18 A	27-Mar-20 A	Close-Out																																									
<b>32128 - Physical Education Accessibility Improvements</b>																																													
<b>Summary / Milestones</b>																																													
Construction	305	22-May-19 A	22-Jul-20 A	Construction																																									
Close-Out	232	03-Sep-19 A	22-Jul-20 A	Close-Out																																									
<b>32130 - PE ADA Improvements - Pathways / Fieldhouse</b>																																													
<b>Summary / Milestones</b>																																													
Construction	200	11-Oct-19 A	16-Jul-20 A	Construction																																									
Furniture, Fixtures & Equipment / Make Ready for Occupancy	30	26-May-20 A	06-Jul-20 A	Furniture, Fixtures & Equipment / Make Ready for Occupancy																																									
Move-In (Close-Out)	30	26-May-20 A	06-Jul-20 A	Move-In (Close-Out)																																									
Close-Out	17	11-Jun-20 A	06-Jul-20 A	Close-Out																																									
<b>32132 - Student Services Complex</b>																																													
<b>Summary / Milestones</b>																																													
Design (Phase III - Student Services Complex)	472	15-Apr-20 A	04-Feb-22 A	Design (Phase III - Student Services Complex)																																									
BID (GMP Process)	357	01-Jan-21 A	17-May-22 A	BID (GMP Process)																																									
DSA	263	28-Jul-21 A	29-Jul-22 A	DSA																																									
Construction	529	12-May-22 A	21-May-24 A	Construction																																									
Furniture, Fixtures & Equipment - Close-Out	398	05-May-23 A	12-Nov-24	Furniture, Fixtures & Equipment - Close-Out																																									
Close-Out	87	11-Jan-24 A	10-May-24 A	Close-Out																																									
Building Occupancy (Fall 2024)	0		12-Nov-24	♦ Building Occupancy (Fall 2024)																																									
<b>32134 - Language Arts Building</b>																																													
<b>32134 - Language Arts Building</b>																																													
Programming	306	01-Apr-19 A	01-Jun-20 A	Programming																																									
Procurement - Design	127	02-Mar-20 A	25-Aug-20 A	Procurement - Design																																									
Design	323	25-Aug-20 A	19-Nov-21 A	Design																																									
BID (GMP Process)	292	28-Sep-20 A	09-Nov-21 A	BID (GMP Process)																																									
DSA Review	186	16-Apr-21 A	31-Dec-21 A	DSA Review																																									
Construction	534	10-Nov-21 A	27-Nov-23 A	Construction																																									
Furniture, Fixtures & Equipment - Close-Out	381	15-Aug-22 A	29-Jan-24 A	Furniture, Fixtures & Equipment - Close-Out																																									
Move-In (Close-Out)	381	15-Aug-22 A	29-Jan-24 A	Move-In (Close-Out)																																									
Close-Out	166	19-Jun-23 A	06-Feb-24 A	Close-Out																																									
Building Occupancy (Winter 2024)	0		29-Jan-24 A	♦ Building Occupancy (Winter 2024)																																									
<b>32138 - Physical Education and Sports Complex</b>																																													
<b>32138.1 - Kinesiology, Physical Education and Aquatics (Bldg. #3)</b>																																													
Phase 32138.1 - Design	106	29-Jan-20 A	24-Jun-20 A	Phase 32138.1 - Design																																									
DSA	86	24-Jun-20 A	21-Oct-20 A	DSA																																									
BID	125	24-Jun-20 A	15-Dec-20 A	BID																																									



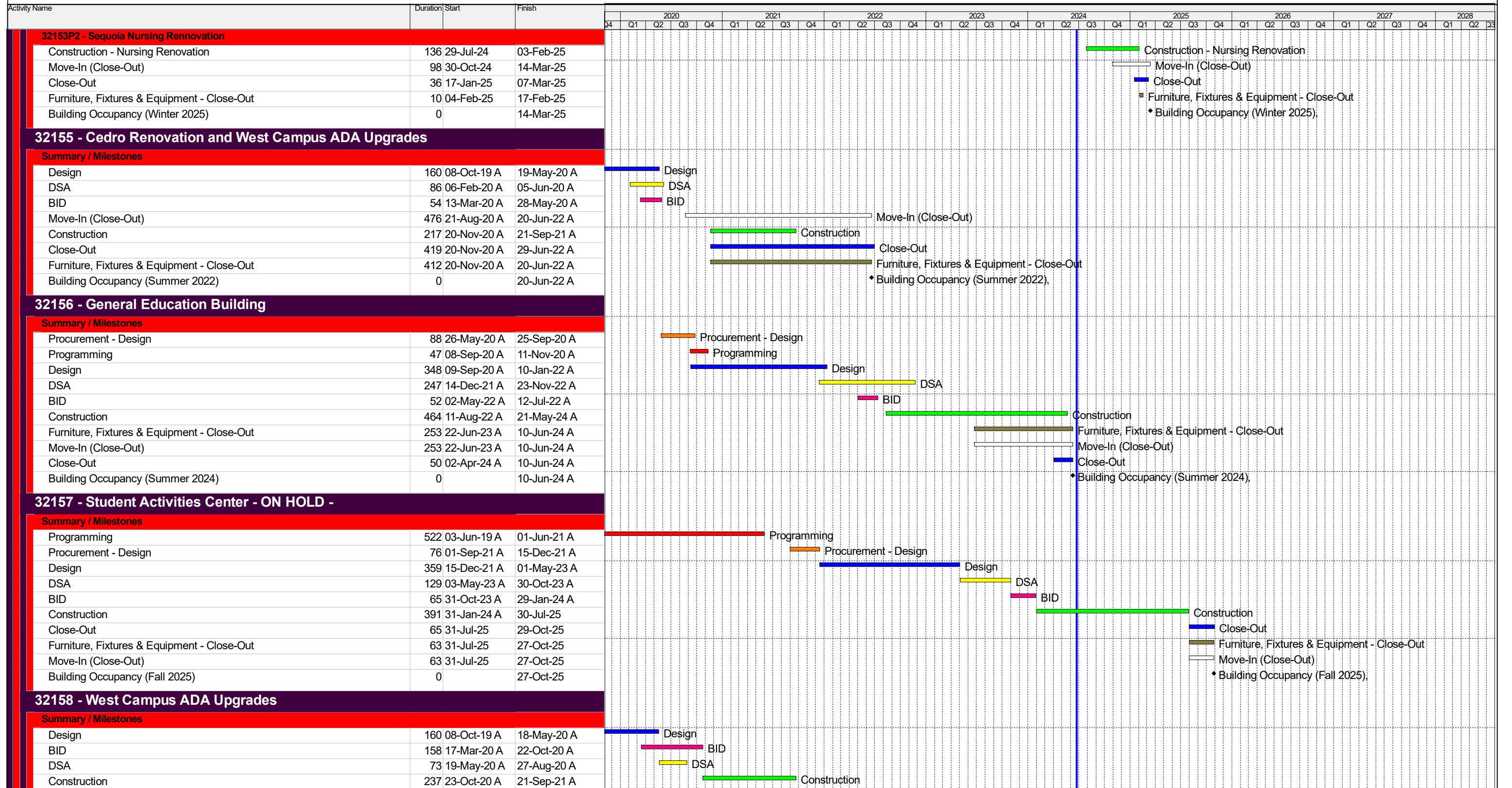
## SJECCD Measure X Bond Program Master Schedule Status as of July 1, 2024



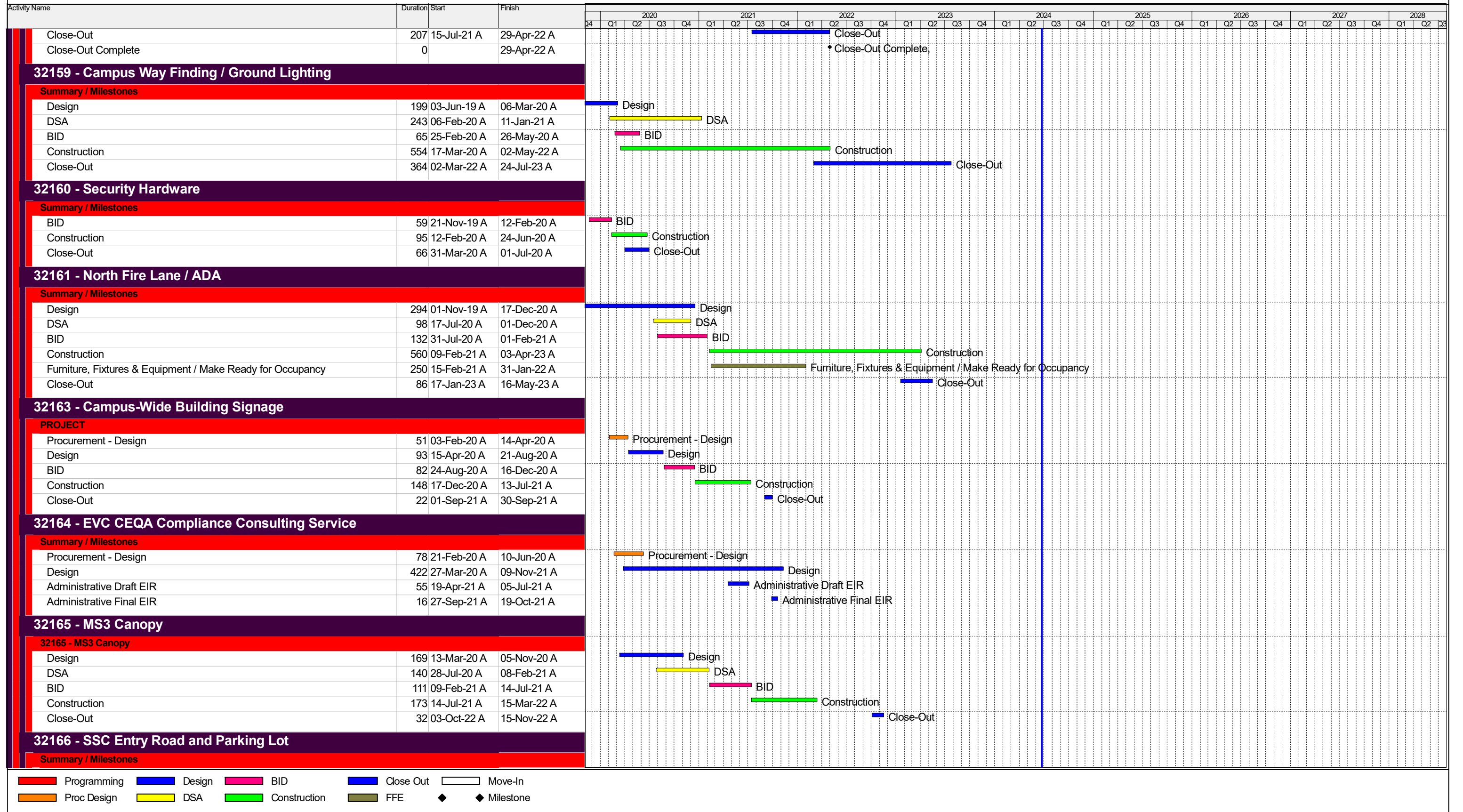


# SJECCD Measure X Bond Program Master Schedule

## Status as of July 1, 2024



# SJECCD Measure X Bond Program Master Schedule Status as of July 1, 2024



■ Programming    
 ■ Design    
 ■ BID    
 ■ Close Out    
  Move-In  
■ Proc Design    
 ■ DSA    
 ■ Construction    
 ■ FFE    
 ◆ Milestone    
 ◆ Milestone

# SJECCD Measure X Bond Program Master Schedule

## Status as of July 1, 2024

Activity Name	Duration	Start	Finish	2020				2021				2022				2023				2024				2025				2026				2027				2028	
				Q1	Q2	Q3	Q4	Q1	Q2	Q3	Q4	Q1	Q2	Q3	Q4	Q1	Q2	Q3	Q4	Q1	Q2	Q3	Q4	Q1	Q2	Q3	Q4	Q1	Q2	Q3	Q4	Q1	Q2	Q3	Q4	Q1	Q2
Design (Phase I - Entry Road and Parking Lot)	596	20-Jan-20 A	02-May-22 A	Design (Phase I - Entry Road and Parking Lot)																																	
DSA	100	24-Mar-21 A	11-Aug-21 A	DSA																																	
BID	158	07-Apr-21 A	13-Nov-21 A	BID																																	
Construction	543	01-Dec-21 A	29-Dec-23 A	Construction																																	
Close-Out	109	01-Aug-23 A	29-Dec-23 A	Close-Out																																	
<b>32168 - Campus-Wide Signage</b>																																					
<b>32168P1P1 - Design Pkg 1 - Site Signage - Phase 1</b>																																					
Procurement - Design	64	01-Sep-21 A	30-Nov-21 A	Procurement - Design																																	
Design	64	01-Dec-21 A	28-Feb-22 A	Design																																	
BID	43	01-Mar-22 A	29-Apr-22 A	BID																																	
Construction	64	02-May-22 A	29-Jul-22 A	Construction																																	
Close-Out	66	01-Aug-22 A	31-Oct-22 A	Close-Out																																	
<b>32168P2P1 - Design Pkg 2 - Building Signage - Phase 1</b>																																					
Procurement - Design	64	01-Sep-21 A	30-Nov-21 A	Procurement - Design																																	
Design	86	01-Apr-22 A	29-Jul-22 A	Design																																	
BID	44	01-Dec-22 A	31-Jan-23 A	BID																																	
Construction	129	01-Feb-23 A	31-Jul-23 A	Construction																																	
Close-Out	66	01-Aug-23 A	31-Oct-23 A	Close-Out																																	
<b>32168P3P2 - Design Pkg 3 - Building Signage - Phase 2</b>																																					
Procurement - Design	65	01-Sep-21 A	30-Nov-21 A	Procurement - Design																																	
Design	172	01-Sep-22 A	28-Apr-23 A	Design																																	
BID	66	01-Aug-23 A	31-Oct-23 A	BID																																	
Construction	263	17-Nov-23 A	19-Nov-24	Construction																																	
Close-Out	44	23-Sep-24	21-Nov-24	Close-Out																																	
<b>32168P3P3 - Design Pkg 3 - Site Signage - Phase 3</b>																																					
Procurement - Design	64	01-Sep-21 A	30-Nov-21 A	Procurement - Design																																	
Design	172	01-Sep-22 A	28-Apr-23 A	Design																																	
BID	66	01-Aug-23 A	31-Oct-23 A	BID																																	
Construction	336	17-Nov-23 A	28-Feb-25	Construction																																	
Close-Out	105	09-Oct-24	04-Mar-25	Close-Out																																	
<b>32169 - EVC Central Plant Upgrade</b>																																					
<b>Summary / Milestones</b>																																					
Procurement - Design	85	01-Apr-22 A	29-Jul-22 A	Procurement - Design																																	
Design	152	01-Aug-22 A	28-Feb-23 A	Design																																	
DSA	65	01-Mar-23 A	31-May-23 A	DSA																																	
Construction	304	01-Jun-23 A	31-Jul-24	Construction																																	
Close-Out	65	01-Aug-24	31-Oct-24	Close-Out																																	
<b>32317 - Pavement Preservation / Roadway and Curb Marking</b>																																					
<b>Summary / Milestones</b>																																					
Construction	219	17-Jun-19 A	16-Apr-20 A	Construction																																	
Close-Out	10	03-Apr-20 A	16-Apr-20 A	Close-Out																																	
<b>EVCTBD07 Environmental Controls Update</b>																																					
<b>Summary / Milestones</b>																																					
Procurement - Design	52	02-Nov-20 A	12-Jan-21 A	Procurement - Design																																	
Construction	135	24-Dec-21 A	30-Jun-22 A	Construction																																	



# SJECCD Measure X Bond Program Master Schedule

## Status as of July 1, 2024

Activity Name	Duration	Start	Finish	2020													2021													2022													2023													2024													2025													2026													2027													2028												
				Q4	Q1	Q2	Q3	Q4	Q1	Q2	Q3	Q4	Q1	Q2	Q3	Q4	Q1	Q2	Q3	Q4	Q1	Q2	Q3	Q4	Q1	Q2	Q3	Q4	Q1	Q2	Q3	Q4	Q1	Q2	Q3	Q4	Q1	Q2	Q3	Q4	Q1	Q2	Q3	Q4	Q1	Q2	Q3	Q4	Q1	Q2	Q3	Q4																																																																				
Close-Out	160	22-Jun-22 A	31-Jan-23 A																																																																																																																					
<b>EVCTBD10 - EVC BMS Assessment</b>																																																																																																																								
<b>Summary / Milestones</b>																																																																																																																								
Project Definition	100	01-Jun-20 A	19-Oct-20 A	Project Definition																																																																																																																				

Programming  
  Design  
  BID  
  Close Out  
  Move-In

Proc Design  
  DSA  
  Construction  
  FFE  
  Milestone

# SJECCD Measure X Bond Program Master Schedule

## Status as of July 1, 2024

Activity Name	Duration	Start	Finish	2020				2021				2022				2023				2024				2025				2026				2027				2028	
				Q4	Q1	Q2	Q3	Q4	Q1	Q2	Q3	Q4	Q1	Q2	Q3	Q4	Q1	Q2	Q3	Q4	Q1	Q2	Q3	Q4	Q1	Q2	Q3	Q4	Q1	Q2	Q3	Q4	Q1	Q2	Q3	Q4	
<b>District and District-wide Projects</b>																																					
<b>39301 - New District Services Building</b>																																					
<b>39301B - District Offices Renovation Project</b>																																					
Design - Renovation Project	240	14-Sep-20 A	16-Aug-21 A	[Gantt bar: Design - Renovation Project]																																	
BID	236	15-Apr-21 A	10-Mar-22 A	[Gantt bar: BID]																																	
Furniture, Fixtures & Equipment / Make Ready for Occupancy	515	03-Jan-22 A	22-Dec-23 A	[Gantt bar: Furniture, Fixtures & Equipment / Make Ready for Occupancy]																																	
Construction	467	22-Mar-22 A	03-Jan-24 A	[Gantt bar: Construction]																																	
Move-In Activities	40	21-Nov-22 A	13-Jan-23 A	[Gantt bar: Move-In Activities]																																	
Close-Out	144	17-Jul-23 A	01-Feb-24 A	[Gantt bar: Close-Out]																																	
<b>39302 - Demolition of San Felipe District Office and South Bay Academy</b>																																					
<b>Summary / Milestones</b>																																					
Construction	222	04-Mar-19 A	08-Jan-20 A	[Gantt bar: Construction]																																	
Close-Out	94	07-Jan-20 A	15-May-20 A	[Gantt bar: Close-Out]																																	
<b>39303 - District Services Furniture &amp; Equipment</b>																																					
<b>Summary / Milestones</b>																																					
Design	267	10-Oct-19 A	16-Oct-20 A	[Gantt bar: Design]																																	
BID	33	30-Nov-20 A	13-Jan-21 A	[Gantt bar: BID]																																	
Construction	180	18-Jan-21 A	24-Sep-21 A	[Gantt bar: Construction]																																	
<b>39313 - ADA Transition Plan - DSA Sets</b>																																					
<b>39313S - ADA Transition Plan - DSA Sets</b>																																					
Project Definition	87	01-Sep-22 A	30-Dec-22 A	[Gantt bar: Project Definition]																																	
Procure Design	65	02-Jan-23 A	31-Mar-23 A	[Gantt bar: Procure Design]																																	
<b>39313S1 - ADA Transition Plan - DSA Sets 1-10</b>																																					
Design	65	03-Apr-23 A	30-Jun-23 A	[Gantt bar: Design]																																	
DSA Review	87	03-Jul-23 A	31-Oct-23 A	[Gantt bar: DSA Review]																																	
Construction	66	01-Nov-23 A	31-Jan-24 A	[Gantt bar: Construction]																																	
Close-Out	42	01-Feb-24 A	29-Mar-24 A	[Gantt bar: Close-Out]																																	
<b>39313S11 - ADA Transition Plan - DSA Sets 11-20</b>																																					
Design	65	03-Jul-23 A	29-Sep-23 A	[Gantt bar: Design]																																	
DSA Review	87	02-Oct-23 A	30-Jan-24 A	[Gantt bar: DSA Review]																																	
Construction	66	31-Jan-24 A	01-May-24 A	[Gantt bar: Construction]																																	
Close-Out	42	02-May-24 A	28-Jun-24	[Gantt bar: Close-Out]																																	
<b>39313S21 - ADA Transition Plan - DSA Sets 21-30</b>																																					
Design	65	02-Oct-23 A	29-Dec-23 A	[Gantt bar: Design]																																	
DSA Review	87	01-Jan-24 A	30-Apr-24 A	[Gantt bar: DSA Review]																																	
Construction	66	01-May-24 A	31-Jul-24	[Gantt bar: Construction]																																	
Close-Out	42	01-Aug-24	27-Sep-24	[Gantt bar: Close-Out]																																	
<b>39313S31 - ADA Transition Plan - DSA Sets 31-40</b>																																					
Design	65	01-Jan-24 A	29-Mar-24 A	[Gantt bar: Design]																																	
DSA Review	87	01-Apr-24 A	30-Jul-24	[Gantt bar: DSA Review]																																	
Construction	66	31-Jul-24	30-Oct-24	[Gantt bar: Construction]																																	
Close-Out	42	31-Oct-24	27-Dec-24	[Gantt bar: Close-Out]																																	
<b>39313S41 - ADA Transition Plan - DSA Sets 41-50</b>																																					
Design	65	01-Apr-24 A	28-Jun-24	[Gantt bar: Design]																																	
DSA Review	87	01-Jul-24	29-Oct-24	[Gantt bar: DSA Review]																																	



## SJECCD Measure X Bond Program Master Schedule Status as of July 1, 2024

Activity Name	Duration	Start	Finish	Timeline																																			
				2020	2021	2022	2023	2024	2025	2026	2027	2028																											
				Q4	Q1	Q2	Q3	Q4	Q1	Q2	Q3	Q4	Q1	Q2	Q3	Q4	Q1	Q2	Q3	Q4	Q1	Q2	Q3	Q4	Q1	Q2	Q3	Q4	Q1	Q2	Q3	Q4	Q1	Q2	Q3	Q4			
Construction	66	30-Oct-24	29-Jan-25																																				
Close-Out	42	30-Jan-25	28-Mar-25																																				
<b>39314 - District Office Elevators Safety and Accessibility Upgrades</b>																																							
<b>Summary / Milestones</b>																																							
Design	59	02-Dec-19 A	21-Feb-20 A																																				
BID	83	17-Feb-20 A	10-Jun-20 A																																				
Construction	283	02-Jun-20 A	01-Jul-21 A																																				
Close-Out	31	02-Jul-21 A	13-Aug-21 A																																				
<b>39315 - District Elevator Assessment</b>																																							
<b>Summary / Milestones</b>																																							
Procurement - Design	55	26-Nov-19 A	11-Feb-20 A																																				
Design	128	12-Feb-20 A	07-Aug-20 A																																				
<b>39629 - District Warehouse &amp; Operations Facility</b>																																							
<b>39629P1 - District Warehouse &amp; Operations Facility - Phase 1</b>																																							
Project Definition	64	02-May-22 A	29-Jul-22 A																																				
Procure Design	132	01-Aug-22 A	31-Jan-23 A																																				
Programming	63	01-Feb-23 A	28-Apr-23 A																																				
Design	219	01-May-23 A	29-Feb-24 A																																				
DSA Review	86	01-Mar-24 A	28-Jun-24																																				
Construction - New Addition & Site	196	01-Jul-24	31-Mar-25																																				
Close-Out	65	01-Apr-25	30-Jun-25																																				
<b>39629P2 - District Warehouse &amp; Operations Facility - Phase 2</b>																																							
Construction - Renovation	195	02-Jun-25	27-Feb-26																																				
Close-Out	65	02-Mar-26	29-May-26																																				
<b>DISTBD02- TECHNICAL SPECIFICATIONS (B&amp;D)</b>																																							
<b>Summary / Milestones</b>																																							
Technical Specifications	96	27-Jul-20 A	08-Dec-20 A																																				

- Programming
  Design
  BID
  Close Out
  Move-In
- Proc Design
  DSA
  Construction
  FFE
  Milestone