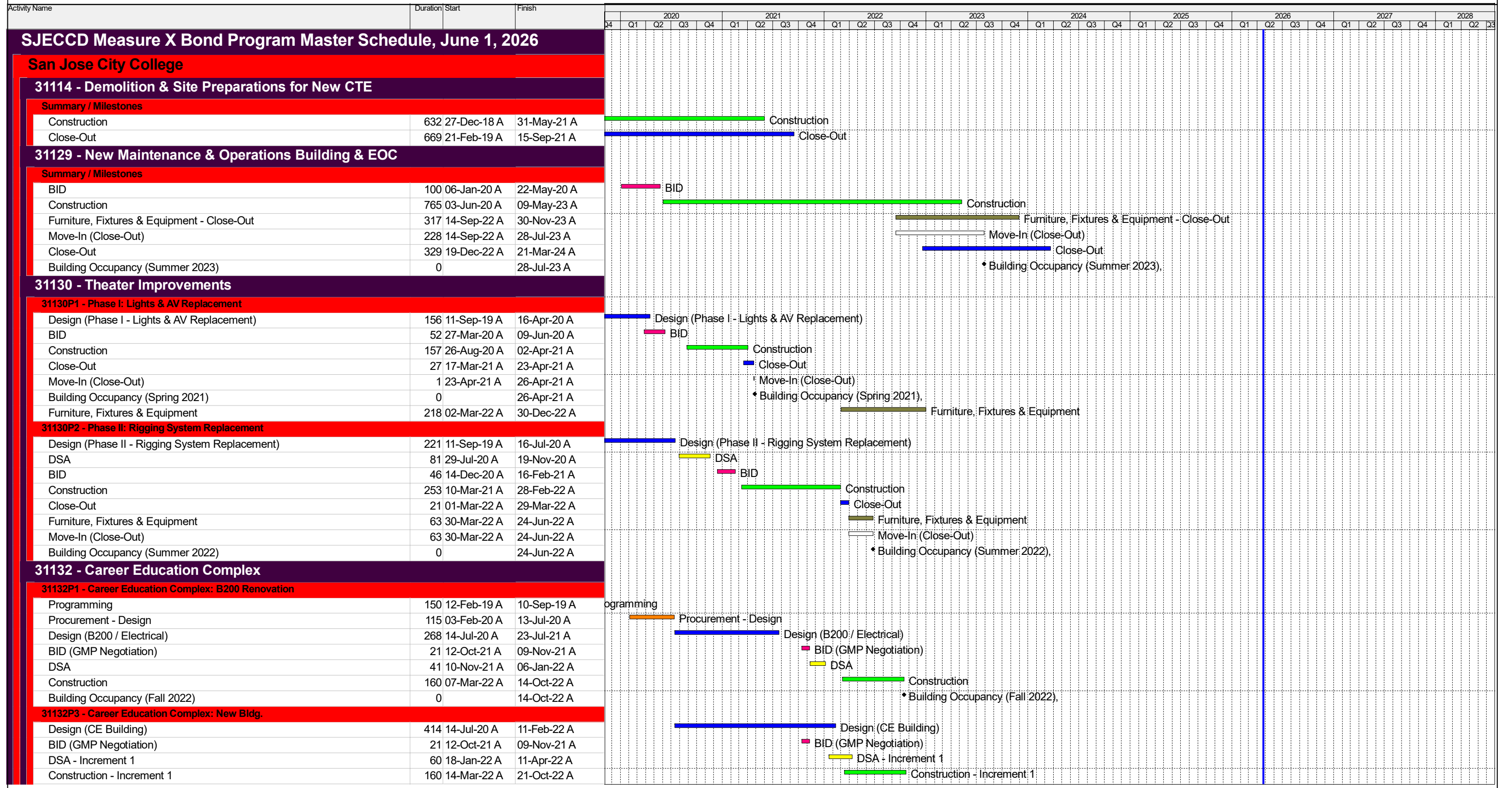


SJECCD Measure X Bond Program Master Schedule

Status as of June 1, 2026



SJECCD Measure X Bond Program Master Schedule

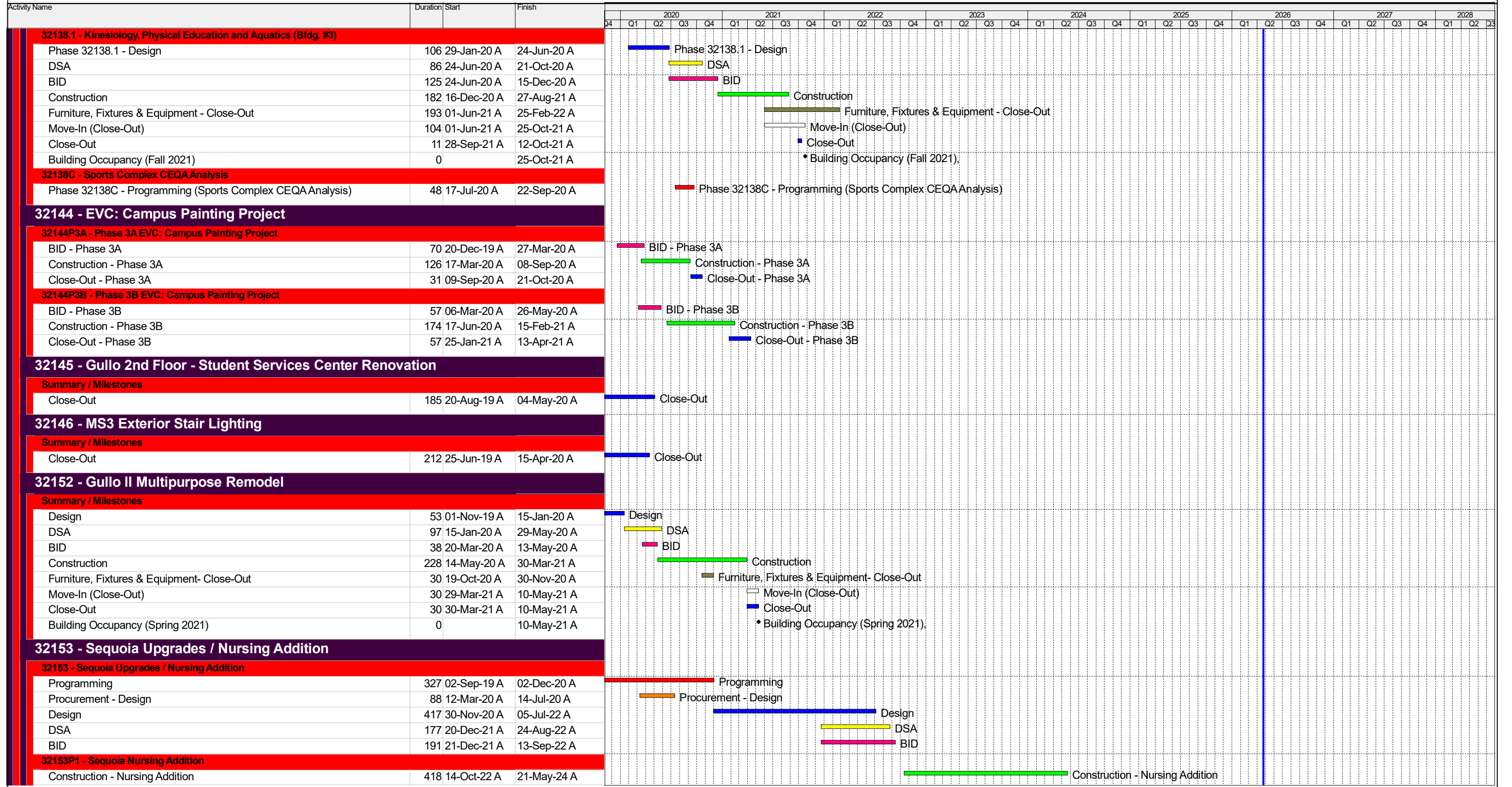
Status as of June 1, 2026

Activity Name	Duration	Start	Finish	2020				2021				2022				2023				2024				2025				2026				2027				2028	
				Q4	Q1	Q2	Q3	Q4	Q1	Q2	Q3	Q4	Q1	Q2	Q3	Q4	Q1	Q2	Q3	Q4	Q1	Q2	Q3	Q4	Q1	Q2	Q3	Q4	Q1	Q2	Q3	Q4	Q1	Q2	Q3	Q4	
Evergreen Valley College																																					
32126 - Acacia Renovation Phase III																																					
Summary / Milestones																																					
Close-Out	254	08-Apr-19 A	27-Mar-20 A	[Gantt bar: Close-Out]																																	
32127 - Gullo Student Space Repurpose and Renovation																																					
Summary / Milestones																																					
Close-Out	377	17-Oct-18 A	27-Mar-20 A	[Gantt bar: Close-Out]																																	
32128 - Physical Education Accessibility Improvements																																					
Summary / Milestones																																					
Construction	305	22-May-19 A	22-Jul-20 A	[Gantt bar: Construction]																																	
Close-Out	232	03-Sep-19 A	22-Jul-20 A	[Gantt bar: Close-Out]																																	
32130 - PE ADA Improvements - Pathways / Fieldhouse																																					
Summary / Milestones																																					
Construction	200	11-Oct-19 A	16-Jul-20 A	[Gantt bar: Construction]																																	
Furniture, Fixtures & Equipment / Make Ready for Occupancy	30	26-May-20 A	06-Jul-20 A	[Gantt bar: Furniture, Fixtures & Equipment / Make Ready for Occupancy]																																	
Move-In (Close-Out)	30	26-May-20 A	06-Jul-20 A	[Gantt bar: Move-In (Close-Out)]																																	
Close-Out	17	11-Jun-20 A	06-Jul-20 A	[Gantt bar: Close-Out]																																	
32132 - Student Services Complex																																					
32132 Phase 1 - Student Services Complex																																					
Design (Phase III - Student Services Complex)	472	15-Apr-20 A	04-Feb-22 A	[Gantt bar: Design (Phase III - Student Services Complex)]																																	
BID (GMP Process)	357	01-Jan-21 A	17-May-22 A	[Gantt bar: BID (GMP Process)]																																	
DSA	263	28-Jul-21 A	29-Jul-22 A	[Gantt bar: DSA]																																	
Construction	551	12-May-22 A	21-Jun-24 A	[Gantt bar: Construction]																																	
Furniture, Fixtures & Equipment - Close-Out	456	05-May-23 A	31-Jan-25 A	[Gantt bar: Furniture, Fixtures & Equipment - Close-Out]																																	
Close-Out	210	11-Jan-24 A	30-Oct-24 A	[Gantt bar: Close-Out]																																	
Building Occupancy (Winter 2025)	0		31-Jan-25 A	[Milestone: Building Occupancy (Winter 2025)]																																	
32132 Phase 2 - Student Services Complex Interior Wayfinding																																					
Design (Student Services Complex - Interior Wayfinding)	35	19-Sep-25 A	07-Nov-25 A	[Gantt bar: Design (Student Services Complex - Interior Wayfinding)]																																	
BID (GMP Process)	10	10-Nov-25 A	21-Nov-25 A	[Gantt bar: BID (GMP Process)]																																	
Construction	35	01-Jun-26	17-Jul-26	[Gantt bar: Construction]																																	
32134 - Language Arts Building																																					
32134 - Language Arts Building																																					
Programming	306	01-Apr-19 A	01-Jun-20 A	[Gantt bar: Programming]																																	
Procurement - Design	127	02-Mar-20 A	25-Aug-20 A	[Gantt bar: Procurement - Design]																																	
Design	323	25-Aug-20 A	19-Nov-21 A	[Gantt bar: Design]																																	
BID (GMP Process)	292	28-Sep-20 A	09-Nov-21 A	[Gantt bar: BID (GMP Process)]																																	
DSA Review	186	16-Apr-21 A	31-Dec-21 A	[Gantt bar: DSA Review]																																	
Construction	534	10-Nov-21 A	27-Nov-23 A	[Gantt bar: Construction]																																	
Furniture, Fixtures & Equipment - Close-Out	381	15-Aug-22 A	29-Jan-24 A	[Gantt bar: Furniture, Fixtures & Equipment - Close-Out]																																	
Move-In (Close-Out)	381	15-Aug-22 A	29-Jan-24 A	[Gantt bar: Move-In (Close-Out)]																																	
Close-Out	166	19-Jun-23 A	06-Feb-24 A	[Gantt bar: Close-Out]																																	
Building Occupancy (Winter 2024)	0		29-Jan-24 A	[Milestone: Building Occupancy (Winter 2024)]																																	
32138 - Physical Education and Sports Complex																																					



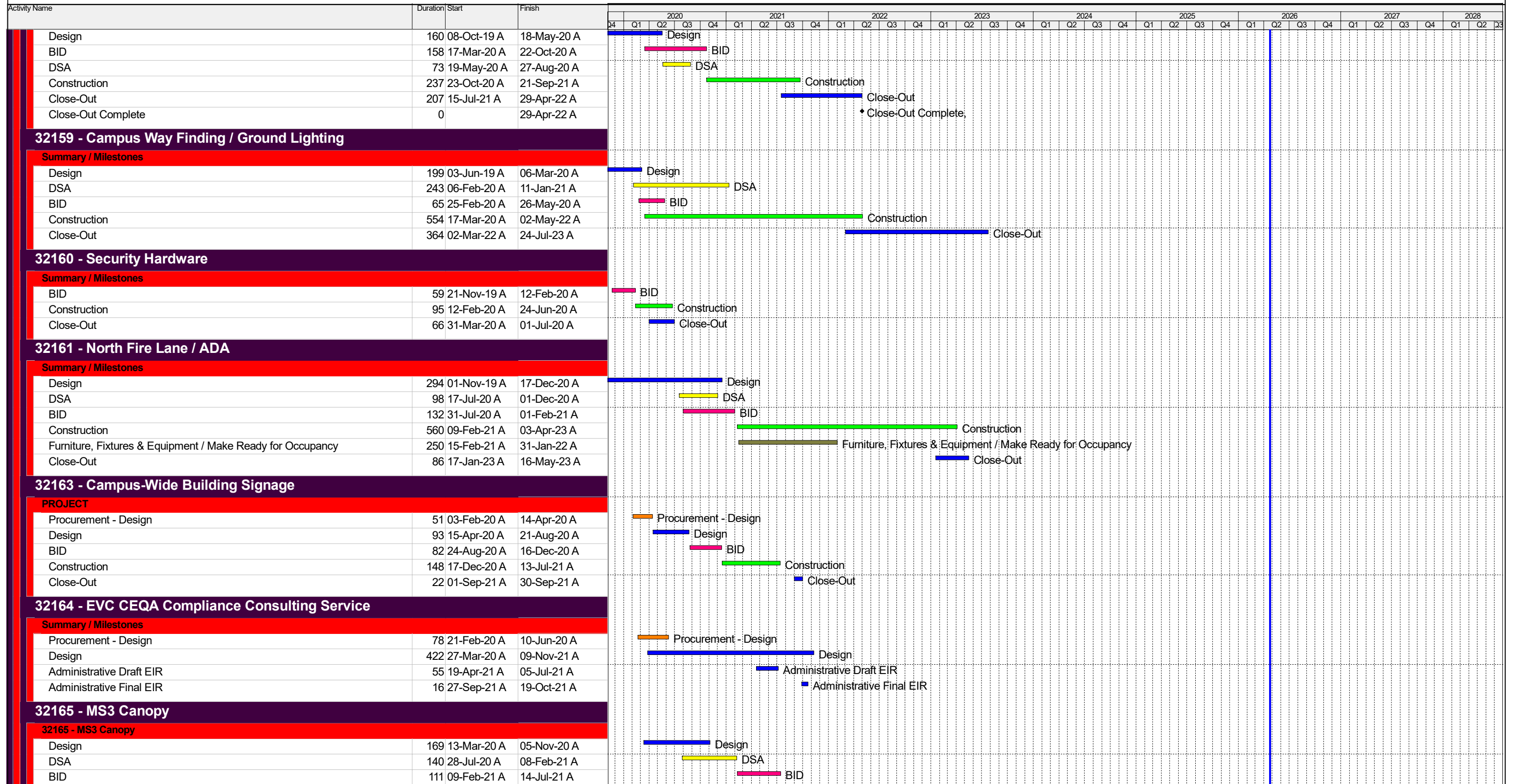
SJECCD Measure X Bond Program Master Schedule

Status as of June 1, 2026



SJECCD Measure X Bond Program Master Schedule

Status as of June 1, 2026



SJECCD Measure X Bond Program Master Schedule

Status as of June 1, 2026

Activity Name	Duration	Start	Finish	2020				2021				2022				2023				2024				2025				2026				2027				2028	
				Q4	Q1	Q2	Q3	Q4	Q1	Q2	Q3	Q4	Q1	Q2	Q3	Q4	Q1	Q2	Q3	Q4	Q1	Q2	Q3	Q4	Q1	Q2	Q3	Q4	Q1	Q2	Q3	Q4	Q1	Q2	Q3	Q4	
District and District-wide Projects																																					
39301 - New District Services Building																																					
39301B - District Offices Renovation Project																																					
Design - Renovation Project	240	14-Sep-20 A	16-Aug-21 A	Design - Renovation Project																																	
BID	236	15-Apr-21 A	10-Mar-22 A	BID																																	
Furniture, Fixtures & Equipment / Make Ready for Occupancy	515	03-Jan-22 A	22-Dec-23 A	Furniture, Fixtures & Equipment / Make Ready for Occupancy																																	
Construction	467	22-Mar-22 A	03-Jan-24 A	Construction																																	
Move-In Activities	40	21-Nov-22 A	13-Jan-23 A	Move-In Activities																																	
Close-Out	296	17-Jul-23 A	02-Sep-24 A	Close-Out																																	
39302 - Demolition of San Felipe District Office and South Bay Academy																																					
Summary / Milestones																																					
Construction	222	04-Mar-19 A	08-Jan-20 A	Construction																																	
Close-Out	94	07-Jan-20 A	15-May-20 A	Close-Out																																	
39303 - District Services Furniture & Equipment																																					
Summary / Milestones																																					
Design	267	10-Oct-19 A	16-Oct-20 A	Design																																	
BID	33	30-Nov-20 A	13-Jan-21 A	BID																																	
Construction	180	18-Jan-21 A	24-Sep-21 A	Construction																																	
39313 - ADA Transition Plan - DSA Sets																																					
39313S - ADA Transition Plan - DSA Sets																																					
Project Definition	87	01-Sep-22 A	30-Dec-22 A	Project Definition																																	
Procure Design	65	02-Jan-23 A	31-Mar-23 A	Procure Design																																	
39313S1 - ADA Transition Plan - DSA Sets 1-10																																					
Design	65	03-Apr-23 A	30-Jun-23 A	Design																																	
DSA Review	87	03-Jul-23 A	31-Oct-23 A	DSA Review																																	
Construction	66	01-Nov-23 A	31-Jan-24 A	Construction																																	
Close-Out	42	01-Feb-24 A	29-Mar-24 A	Close-Out																																	
39313S11 - ADA Transition Plan - DSA Sets 11-20																																					
Design	65	03-Jul-23 A	29-Sep-23 A	Design																																	
DSA Review	87	02-Oct-23 A	30-Jan-24 A	DSA Review																																	
Construction	66	31-Jan-24 A	01-May-24 A	Construction																																	
Close-Out	42	02-May-24 A	28-Jun-24 A	Close-Out																																	
39313S21 - ADA Transition Plan - DSA Sets 21-30																																					
Design	65	02-Oct-23 A	29-Dec-23 A	Design																																	
DSA Review	87	01-Jan-24 A	30-Apr-24 A	DSA Review																																	
Construction	66	01-May-24 A	31-Jul-24 A	Construction																																	
Close-Out	42	01-Aug-24 A	27-Sep-24 A	Close-Out																																	
39313S31 - ADA Transition Plan - DSA Sets 31-40																																					
Design	65	01-Jan-24 A	29-Mar-24 A	Design																																	
DSA Review	87	01-Apr-24 A	30-Jul-24 A	DSA Review																																	
Construction	66	31-Jul-24 A	30-Oct-24 A	Construction																																	
Close-Out	42	31-Oct-24 A	27-Dec-24 A	Close-Out																																	
39313S41 - ADA Transition Plan - DSA Sets 41-50																																					
Design	65	01-Apr-24 A	28-Jun-24 A	Design																																	
DSA Review	87	01-Jul-24 A	29-Oct-24 A	DSA Review																																	

█ Programming
 █ Design
 █ BID
 █ Close Out
 Move-In
█ Proc Design
 █ DSA
 █ Construction
 █ FFE
 ◆ Milestone

